

iNkotha Investments

iNkotha report as at 31 December 2019

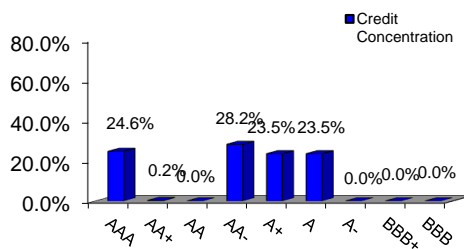
Notes issued

| | | |
|--------------------------------|--|------------------------------|
| Program Limit | 10 ZAR billion | Issue Price |
| Total notes outstanding | 852 ZAR million | Issue Price |
| | 852 ZAR million | Outstanding Principal Amount |
| Maximum tenor allowed | 5 years and 1 day | |
| Maximum tenor outstanding | 5 years and 1 day | |
| Average tenor | 1 day (based on Original Principal Amount) | |
| Conditions preventing issuance | No (Yes/No) | |

Assets(including rated assets but excluding permitted investments)

| | |
|------------------------------------|---------------------------------|
| Maximum maturity | 1 day |
| Average maturity | 1 day (based on accreted value) |
| Largest % of any obligor | 28% |
| Book value - Rated Assets | 850 ZAR million |
| Book value - Permitted Investments | 2 ZAR million |
| Program Wind Down Event | No (Yes/no) |

Asset Concentration (including permitted investments)



Rating

DISCLAIMER

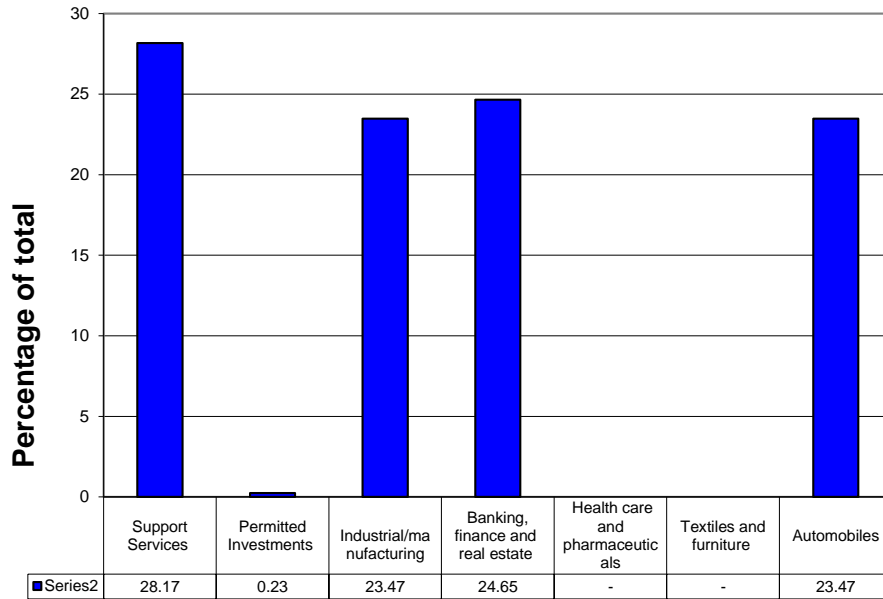
This report has been prepared by FirstRand Bank Limited, acting through Rand Merchant Bank ("RMB"), which is an authorised Financial Services Provider.

The information contained in this report is confidential and intended solely for the intended recipient. This report may contain information proprietary to RMB and accordingly may not be reproduced, acted upon or disseminated in whole or in part without RMB's prior written consent. By receiving this report the recipient undertakes to keep the information contained in the report confidential and not to do any act or allow same to be done on his behalf which is in breach of the abovementioned prohibition.

Any liability of whatsoever nature and howsoever arising on the part of RMB, its directors, officers, employees and agents relating to the contents of this report is hereby expressly disclaimed.

Asset Exposures (based on accreted values and including permitted investments)

Industry make up of Portfolio



Exposures by Borrower (excluding permitted investments)

| Name | Amount |
|--|-------------|
| Bidvest Treasury services (Proprietary) Limited | 240,000,000 |
| Nampak Products Limited | 200,000,000 |
| Scania Finance Southern Africa (proprietary) Limited | 210,000,000 |
| Motus Group Limited / Motus Holdings Ltd (guarantor) | 200,000,000 |

DISCLAIMER

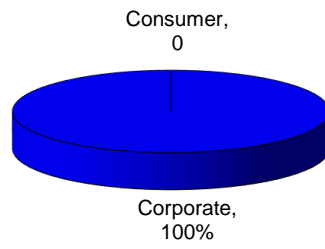
This report has been prepared by FirstRand Bank Limited, acting through Rand Merchant Bank ("RMB"), which is an authorised Financial Services Provider.

The information contained in this report is confidential and intended solely for the intended recipient. This report may contain information proprietary to RMB and accordingly may not be reproduced, acted upon or disseminated in whole or in part without RMB's prior written consent. By receiving this report the recipient undertakes to keep the information contained in the report confidential and not to do any act or allow same to be done on his behalf which is in breach of the abovementioned prohibition.

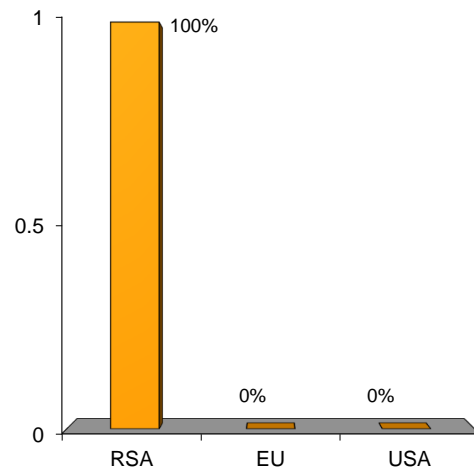
Any liability of whatsoever nature and howsoever arising on the part of RMB, its directors, officers, employees and agents relating to the contents of this report is hereby expressly disclaimed.

Asset Origination

Asset Type



Country of Origination



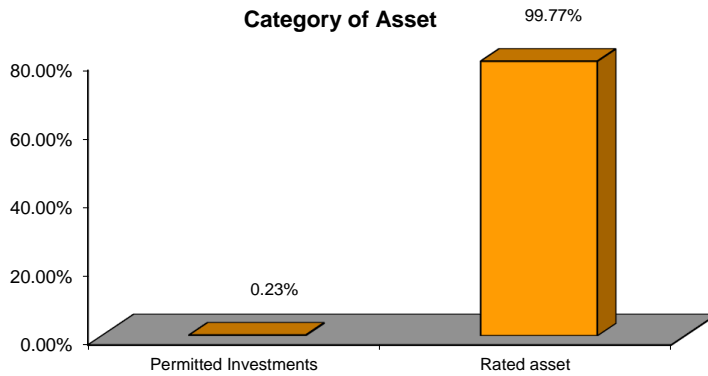
DISCLAIMER

This report has been prepared by FirstRand Bank Limited, acting through Rand Merchant Bank ("RMB"), which is an authorised Financial Services Provider.

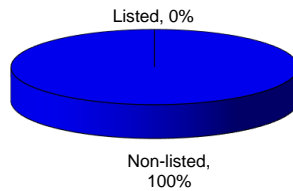
The information contained in this report is confidential and intended solely for the intended recipient. This report may contain information proprietary to RMB and accordingly may not be reproduced, acted upon or disseminated in whole or in part without RMB's prior written consent. By receiving this report the recipient undertakes to keep the information contained in the report confidential and not to do any act or allow same to be done on his behalf which is in breach of the abovementioned prohibition.

Any liability of whatsoever nature and howsoever arising on the part of RMB, its directors, officers, employees and agents relating to the contents of this report is hereby expressly disclaimed.

Asset Category



Asset Listing Status



Other

Liquidity facility providers

Minimum Liquidity Commitment Not Applicable

Credit Enhancement Not Applicable

Placement agents RMB Money Market

Make Whole Facility Not Applicable

Hedge counterparties Not Applicable

Simple Obligor Concentration Test: not to exceed 33% of rated assets

The largest obligor concentration is 28%

DISCLAIMER

This report has been prepared by FirstRand Bank Limited, acting through Rand Merchant Bank ("RMB"), which is an authorised Financial Services Provider.

The information contained in this report is confidential and intended solely for the intended recipient. This report may contain information proprietary to RMB and accordingly may not be reproduced, acted upon or disseminated in whole or in part without RMB's prior written consent. By receiving this report the recipient undertakes to keep the information contained in the report confidential and not to do any act or allow same to be done on his behalf which is in breach of the abovementioned prohibition.

Any liability of whatsoever nature and howsoever arising on the part of RMB, its directors, officers, employees and agents relating to the contents of this report is hereby expressly disclaimed.

Deal Specific News

Weighted average implied long term credit quality of the portfolio: AA-(ZA)

Weighted average implied short term credit quality of the portfolio: A1+(ZA)

Rating of notes in issue: A1+(ZA)(sf)

DISCLAIMER

This report has been prepared by FirstRand Bank Limited, acting through Rand Merchant Bank ("RMB"), which is an authorised Financial Services Provider.

The information contained in this report is confidential and intended solely for the intended recipient. This report may contain information proprietary to RMB and accordingly may not be reproduced, acted upon or disseminated in whole or in part without RMB's prior written consent. By receiving this report the recipient undertakes to keep the information contained in the report confidential and not to do any act or allow same to be done on his behalf which is in breach of the abovementioned prohibition.

Any liability of whatsoever nature and howsoever arising on the part of RMB, its directors, officers, employees and agents relating to the contents of this report is hereby expressly disclaimed.